



MISSION, KS OFFICE BUILDING

5845 Horton St., Mission, KS | A Kansas City Suburb



LEASE RATE: \$20/SF | 200-1,050 SF AVAILABLE

DEMOGRAPHICS

	1 mile	3 miles	5 miles
Estimated Population	11,038	89,249	259,415
Avg. Household Income	\$84,065	\$103,825	\$98,567

- Small office suites available - FOR LEASE
- Located off main Johnson Drive corridor
- Easy highway access
- Full service lease
- Surrounded by numerous retailers and restaurants

 [CLICK HERE TO VIEW MORE LISTING INFORMATION](#)

For More Information Contact:

PHIL PECK, CCIM | 816.412.7364 | ppeck@blockandco.com

Exclusive Agent



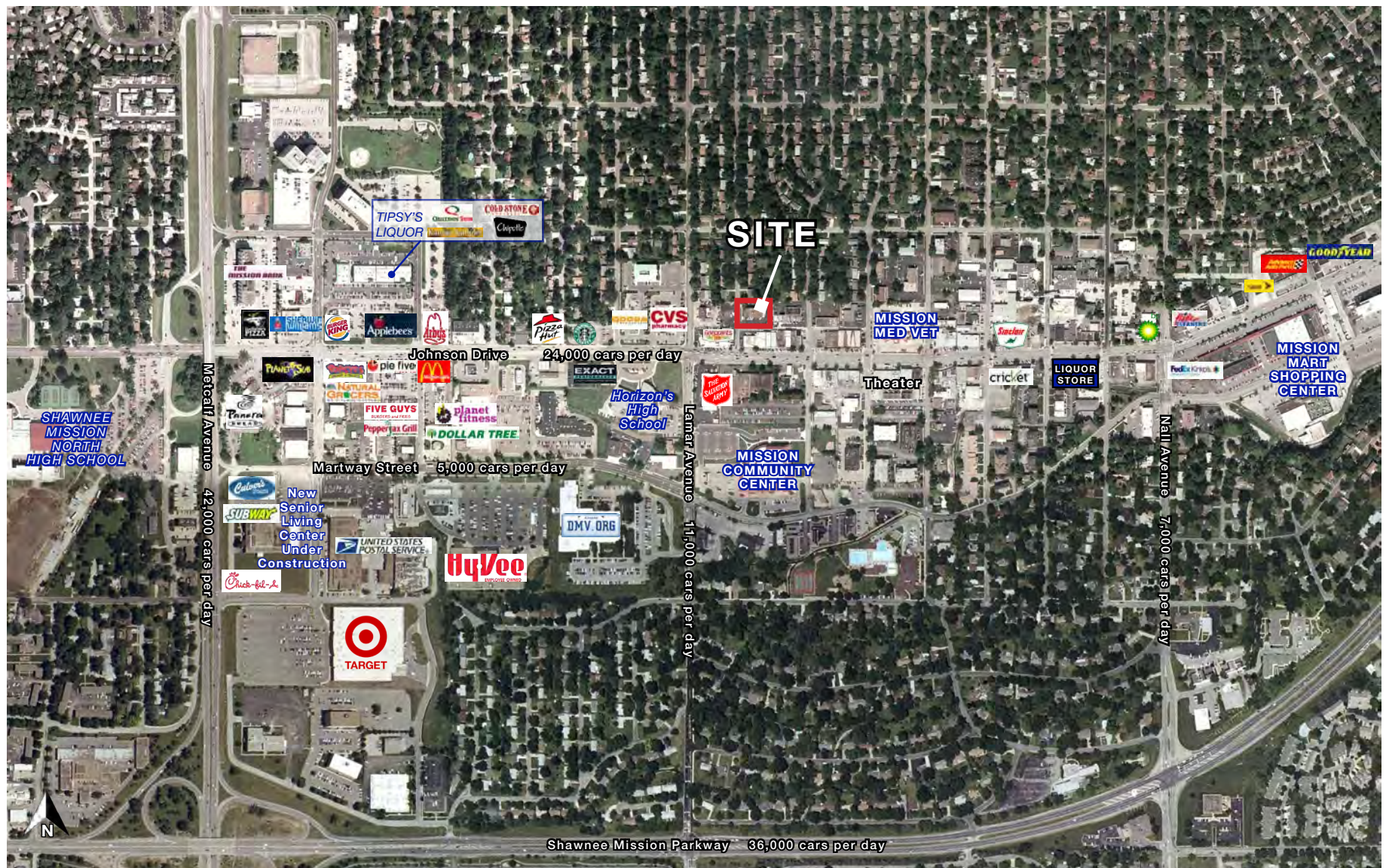


MISSION, KS OFFICE BUILDING

5845 Horton St., Mission, KS | A Kansas City Suburb

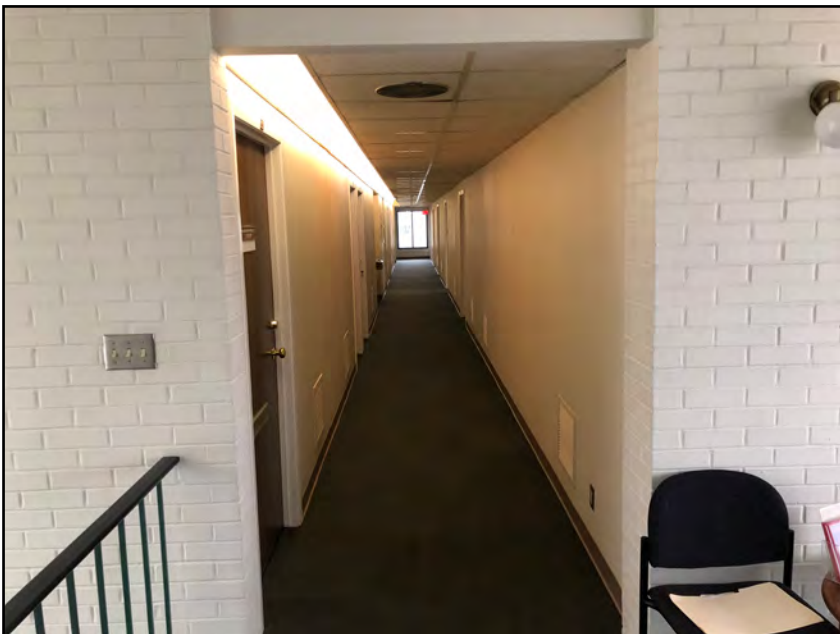
200-1,050 SF OFFICE SUITES AVAILABLE FOR LEASE

AERIAL



All information furnished regarding property for sale or lease is from sources deemed reliable, but no warranty or representation is made as to the accuracy thereof and the same is subject to errors, omissions, changes of prices, rental or other conditions, prior sale or lease or withdrawal without notice.

PHOTOS





MISSION, KS OFFICE BUILDING

5845 Horton St., Mission, KS | A Kansas City Suburb

200-1,050 SF OFFICE SUITES AVAILABLE FOR LEASE

UPPER LEVEL FLOOR PLAN



	PROJECT HORTON OFFICES	PROJECT NUMBER 1902.1	<small>© 2015 Luxe Architects, LLC. All rights reserved. No part of this document may be reproduced or stored in any form without the prior written authorization of Luxe Architects, LLC.</small>
	5845 HORTON MISSION, KS 66202	SHEET AUTHOR Author	SHEET NUMBER PE13

SCALE: 3/16" = 1'-0"
UPPER LEVEL

LUXE ARCHITECTS/CSO



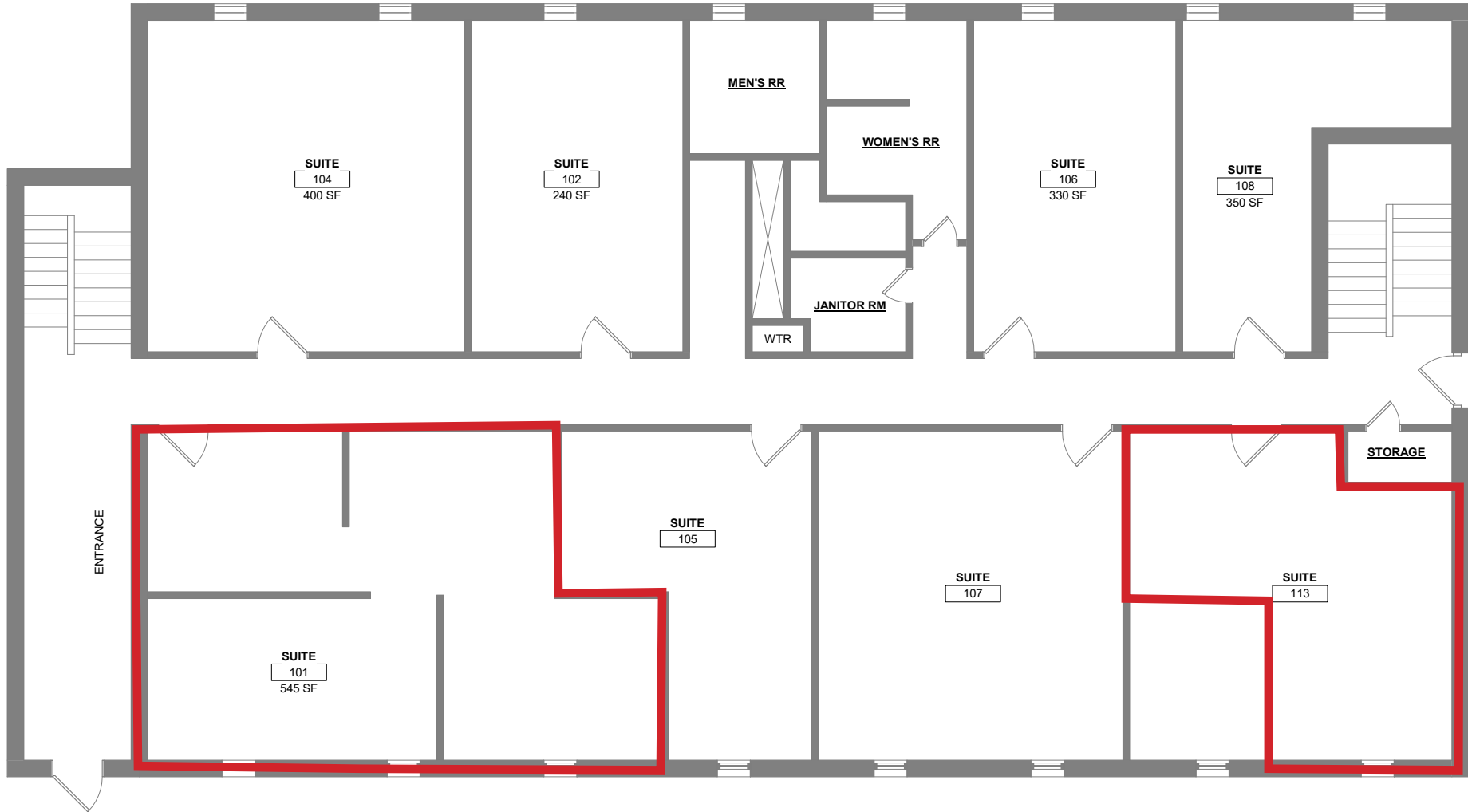


MISSION, KS OFFICE BUILDING

5845 Horton St., Mission, KS | A Kansas City Suburb

200-1,050 SF OFFICE SUITES AVAILABLE FOR LEASE

MAIN LEVEL FLOOR PLAN



	PROJECT HORTON OFFICES	PROJECT NUMBER 1902.1	<small>© 2015 Luxe Architects, LLC. All rights reserved. No part of this document may be reproduced or utilized in any form without the prior written authorization of Luxe Architects, LLC.</small>
	5845 HORTON MISSION, KS 66202	SHEET AUTHOR P.J.P.	SHEET NUMBER PE12

SCALE: 3/16" = 1'-0"
MAIN LEVEL

LUXEARCHITECTS.COM





MISSION, KS OFFICE BUILDING

5845 Horton St., Mission, KS | A Kansas City Suburb

200-1,050 SF OFFICE SUITES AVAILABLE FOR LEASE

LOWER LEVEL FLOOR PLAN



	PROJECT HORTON OFFICES 5845 HORTON MISSION, KS 66202	PROJECT NUMBER 1902-1 <small>©2019 Luxe Architects, LLC. All rights reserved. No part of this document may be reproduced or utilized in any form without the prior written authorization of Luxe Architects, LLC.</small>	LUXEARCHITECTS.COM
	SHEET AUTHOR Author	SHEET NUMBER PE11	

SCALE: 3/16" = 1'-0"
LOWER LEVEL



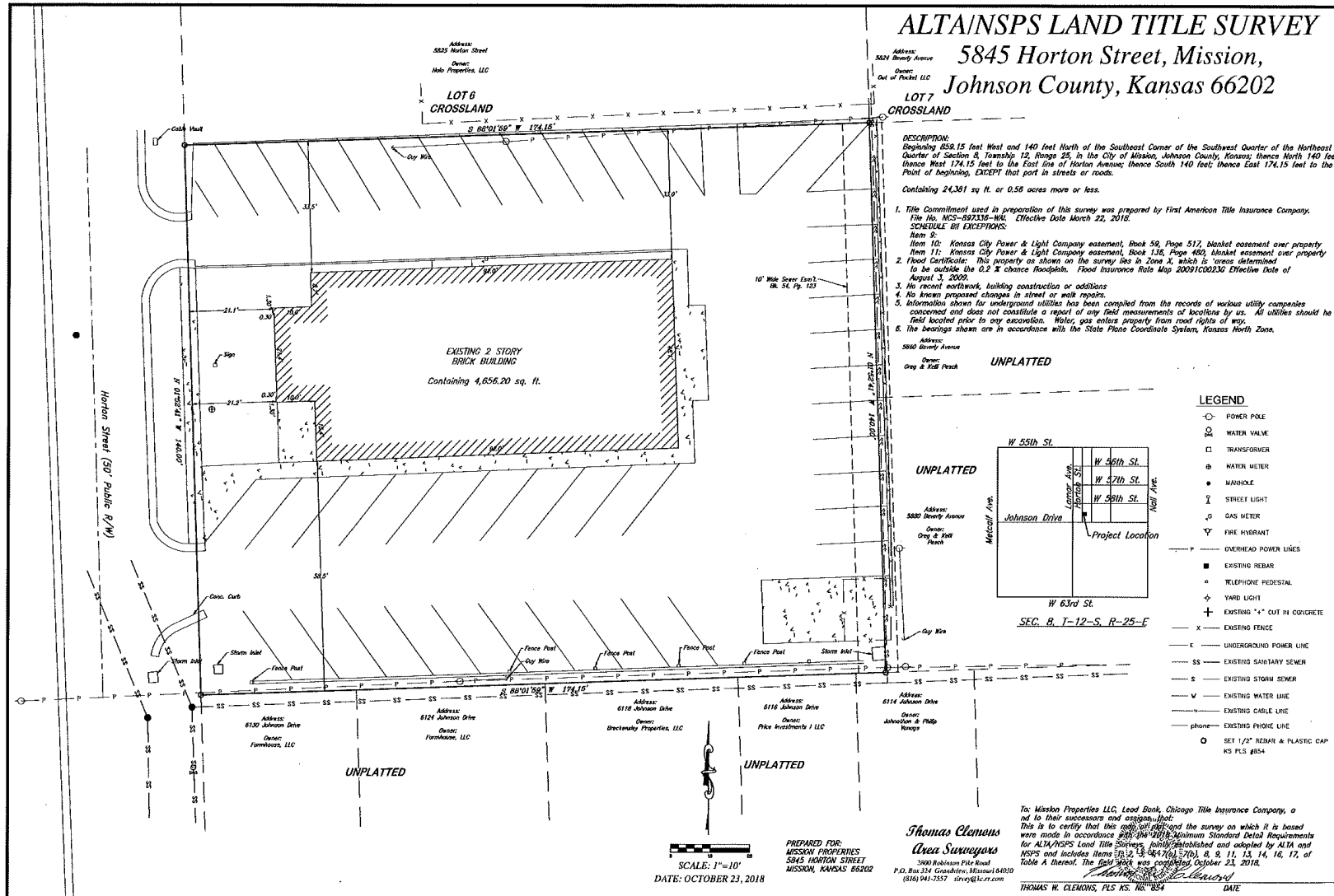


MISSION, KS OFFICE BUILDING

5845 Horton St., Mission, KS | A Kansas City Suburb

200-1,050 SF OFFICE
SUITES AVAILABLE
FOR LEASE

SURVEY

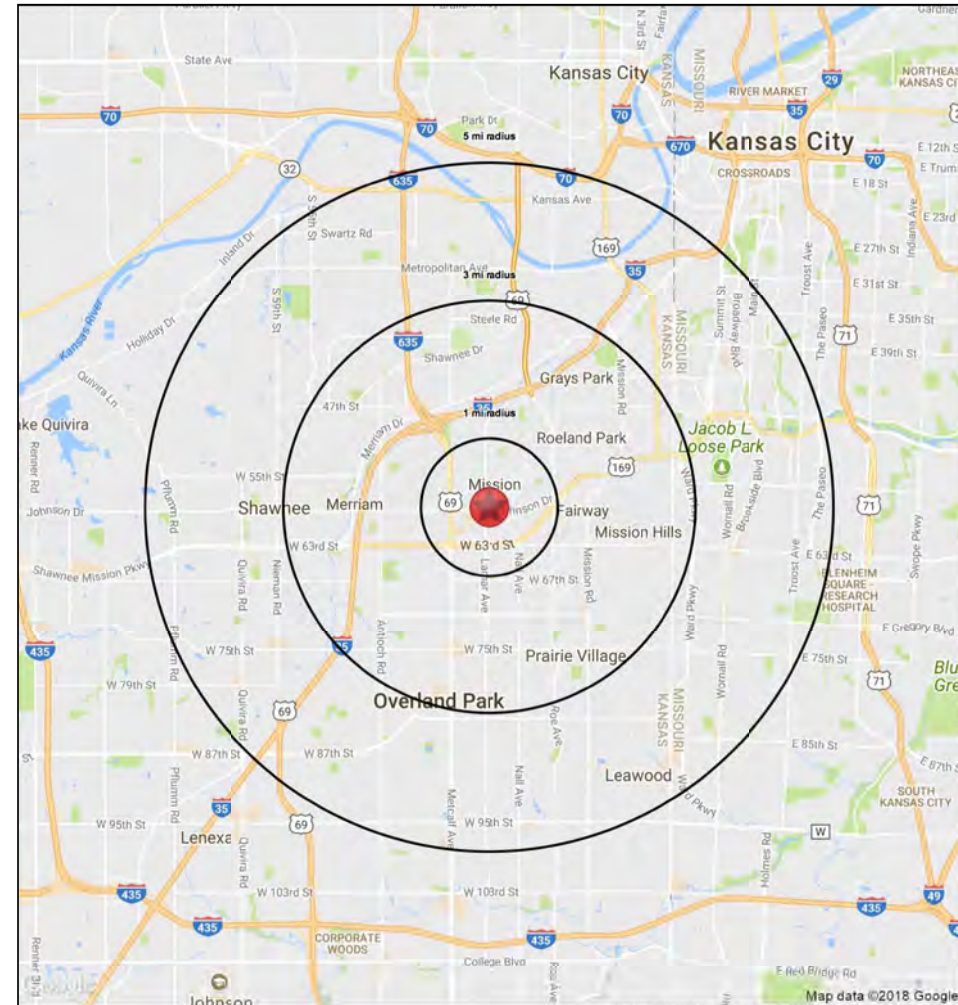
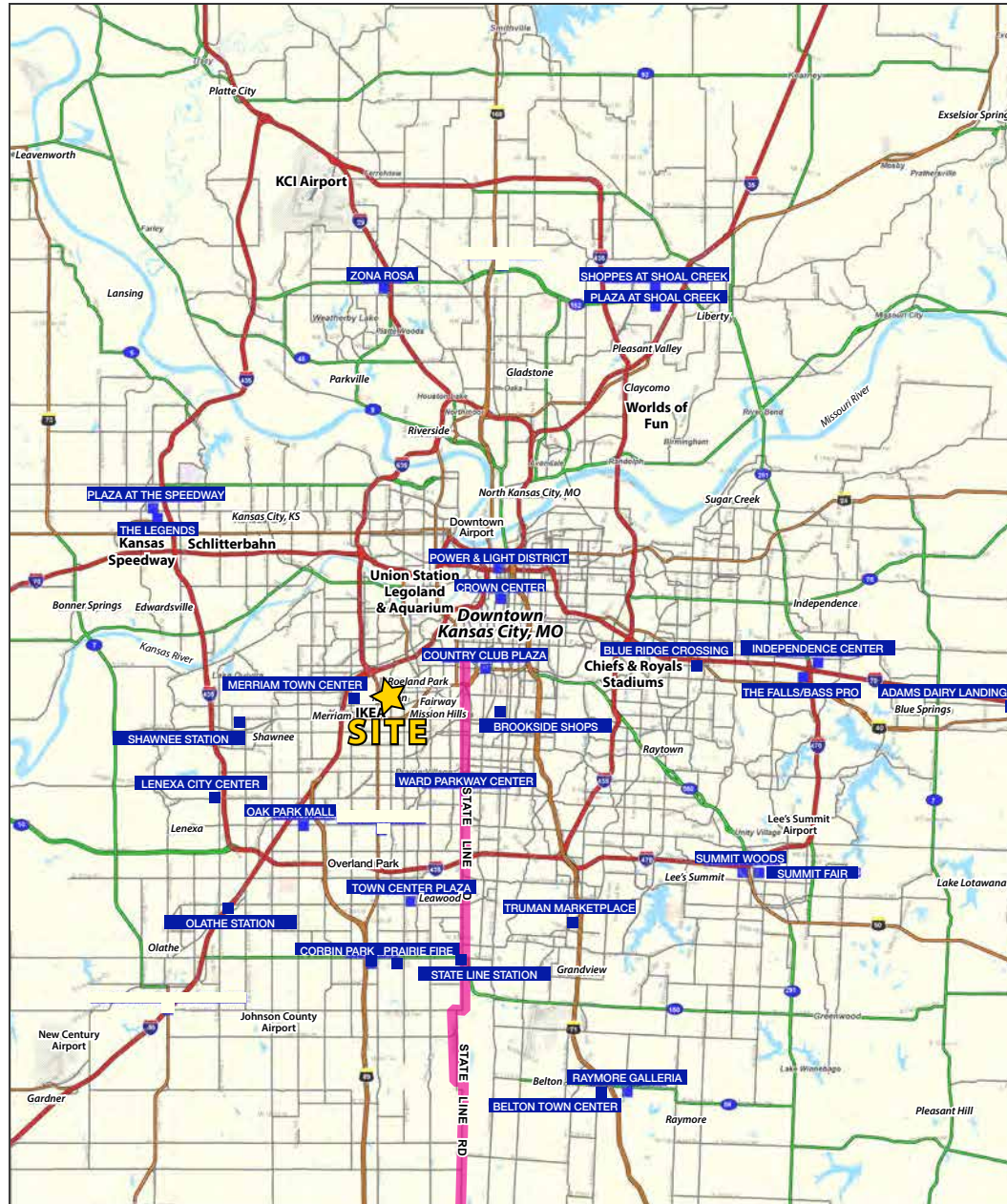




MISSION, KS OFFICE BUILDING

5845 Horton St., Mission, KS | A Kansas City Suburb

200-1,050 SF OFFICE SUITES AVAILABLE FOR LEASE





MISSION, KS OFFICE BUILDING

5845 Horton St., Mission, KS | A Kansas City Suburb

5845 Horton St Mission, KS 66202	1 mi radius	3 mi radius	5 mi radius
Population			
2022 Estimated Population	11,038	89,249	259,415
2027 Projected Population	10,927	88,811	260,423
2020 Census Population	11,000	88,995	259,068
2010 Census Population	10,473	86,616	249,177
Projected Annual Growth 2022 to 2027	-0.2%	-	-
Historical Annual Growth 2010 to 2022	0.4%	0.3%	0.3%
2022 Median Age	39.7	38.2	38.8
Households			
2022 Estimated Households	5,477	39,634	116,831
2027 Projected Households	5,488	39,739	117,898
2020 Census Households	5,457	39,448	116,579
2010 Census Households	5,200	38,504	111,805
Projected Annual Growth 2022 to 2027	-	-	0.2%
Historical Annual Growth 2010 to 2022	0.4%	0.2%	0.4%
Race and Ethnicity			
2022 Estimated White	80.5%	76.5%	72.6%
2022 Estimated Black or African American	4.1%	4.7%	7.8%
2022 Estimated Asian or Pacific Islander	2.3%	2.6%	3.4%
2022 Estimated American Indian or Native Alaskan	0.4%	0.6%	0.6%
2022 Estimated Other Races	12.7%	15.7%	15.7%
2022 Estimated Hispanic	10.5%	14.9%	14.6%
Income			
2022 Estimated Average Household Income	\$84,065	\$103,825	\$98,567
2022 Estimated Median Household Income	\$77,765	\$82,795	\$77,095
2022 Estimated Per Capita Income	\$41,779	\$46,168	\$44,521
Education (Age 25+)			
2022 Estimated Elementary (Grade Level 0 to 8)	1.2%	2.6%	2.5%
2022 Estimated Some High School (Grade Level 9 to 11)	1.4%	3.5%	3.6%
2022 Estimated High School Graduate	14.0%	17.5%	18.0%
2022 Estimated Some College	20.9%	19.1%	18.7%
2022 Estimated Associates Degree Only	6.0%	7.2%	7.1%
2022 Estimated Bachelors Degree Only	34.3%	30.2%	30.3%
2022 Estimated Graduate Degree	22.3%	19.9%	19.7%
Business			
2022 Estimated Total Businesses	784	3,458	12,346
2022 Estimated Total Employees	11,563	44,328	186,437
2022 Estimated Employee Population per Business	14.7	12.8	15.1
2022 Estimated Residential Population per Business	14.1	25.8	21.0

©2022, Sites USA, Chandler, Arizona, 480-491-1112 Demographic Source: Applied Geographic Solutions 6/2022, TIGER Geography - RS1

